

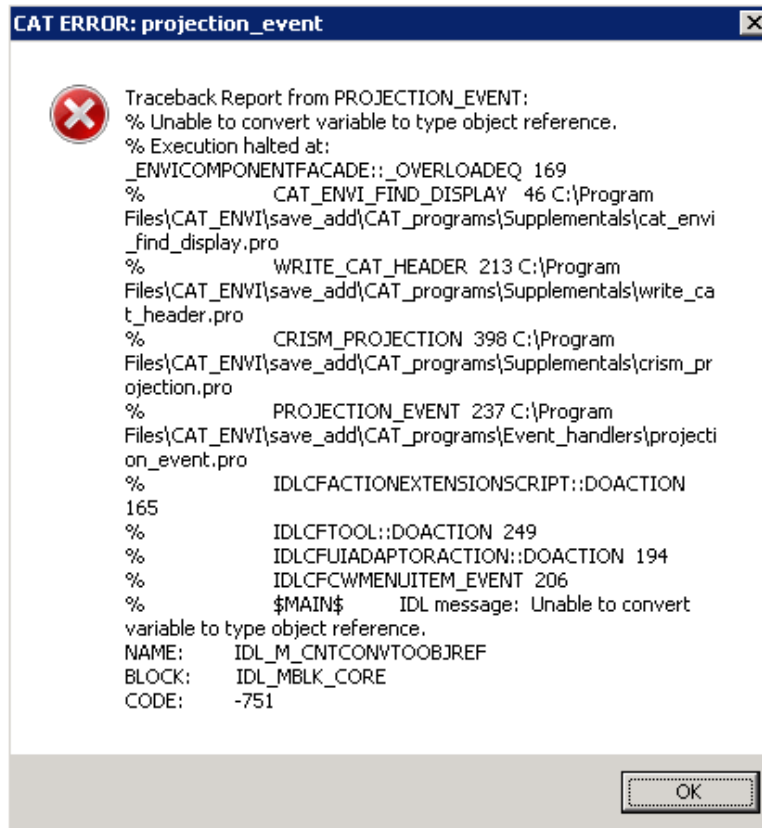
Bug Fix report of CAT for ENVI 5.3 and above

Update date: 03/16/2018/7

Bugs fixed

1. **What the bug is:**

CAT users in ENVI 5.4 may get an error when using CAT Map Utilities to Project Single Cube Data:



This is due to a code bug in cat_envi_find_display.pro file locates:

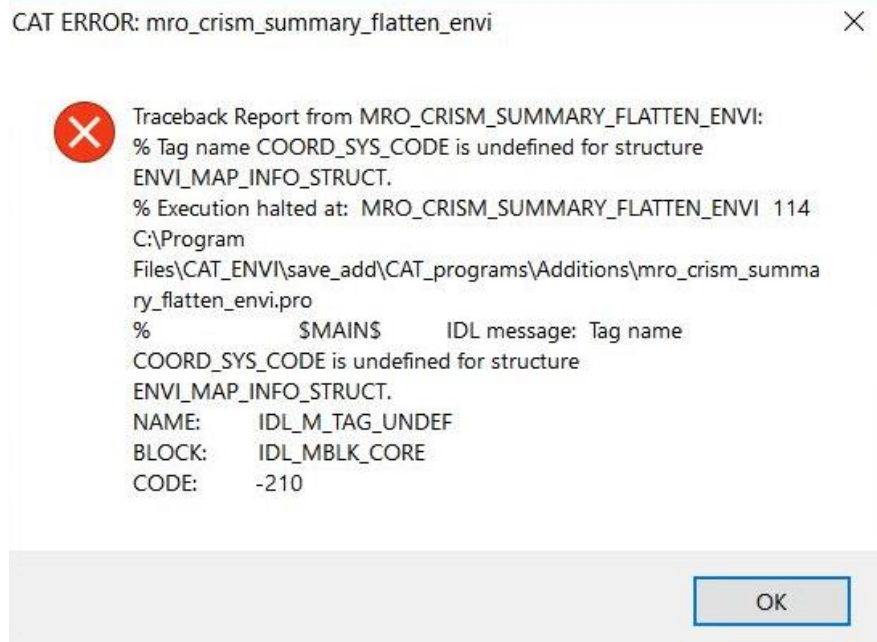
`\CAT_ENVI\save_add\CAT_programs\Supplementals\cat_envi_find_display.pro`

Solution:

Download the CAT_ENVI_Patch_03162018.zip from PDS Geosciences Node website and replace the program file as noted.

2. **What the bug is:**

CAT users in ENVI classic may get an error when process the map projected cube data:



This is caused by a change of map projection structure between ENVI classic and ENVI 5.3 and above. The affected files include:

`\CAT_ENVI\save_add\CAT_programs\Additions\mro_crism_continuum_cube_cat_envi.pro`
`\CAT_ENVI\save_add\CAT_programs\Additions\mro_crism_summary_flatten_envi.pro`
`\CAT_ENVI\save_add\CAT_programs\Event_handlers\mro_crism_remove_stripes_envi.pro`
`\CAT_ENVI\save_add\CAT_programs\Event_handlers\convert_pds2cat_event.pro`

Solution:

Download the CAT_ENVI_Patch_03162018.zip from PDS Geosciences Node website and replace the program files as noted.