

Mariner Mars 1969 Far and Near Encounter Thumbnail Images

Thomas C. Duxbury
Physics and Astronomy Department
George Mason University
Fairfax, VA 22030 USA
16 May 2018

The author obtained a grant for the NASA Planetary Science Division Planetary Data Archive, Restoration and Technology Program (PDART) to restore the Mariner Mars 1969 Mariner 6 and 7 Far and Near Encounter images from data available at the National Space Science Data Center (NSSDC) and the Planetary Data System (PDS). Ancillary NAIF SPICE kernels were also produced to complete the archive. Edmonds and Robinson (2003) performed photometric analyses of these images and produced their own archive without documentation or SPICE kernels that might be another possible source of these images. Mariner 6 and 7 Far and Near Encounter thumbnail images, obtained from Edmonds and Robinson (2003) at <http://ser.sese.asu.edu/M67/mar67.html>, are included in the following figures:

- Figure 1. Mariner 6 Far Encounter images 1 - 26
- Figure 2. Mariner 6 Far Encounter images 27 - 49
- Figure 3. Mariner 7 Far Encounter images 1 - 27
- Figure 4. Mariner 7 Far Encounter images 30 - 64
- Figure 5. Mariner 7 Far Encounter images 65 - 90
- Figure 6. Mariner 7 Far Encounter images 91 - 94
- Figure 7. Mariner 6 Near Encounter images 2 - 25
- Figure 8. Mariner 7 Near Encounter images 1 - 21
- Figure 9. Mariner 7 Near Encounter images 22 - 32

The images are monotonically increasing in number but not always consecutive. Some images overflowed the magnetic tape storage on-board the spacecraft and were not downlinked.

REFERENCES

- Edmonds, J. L. and M. S. Robinson, New Mariner 6 and 7 mosaics of Mars: clues about time variable surface features, Lunar and Planetary Science XXXIV (2003), 1436.pdf

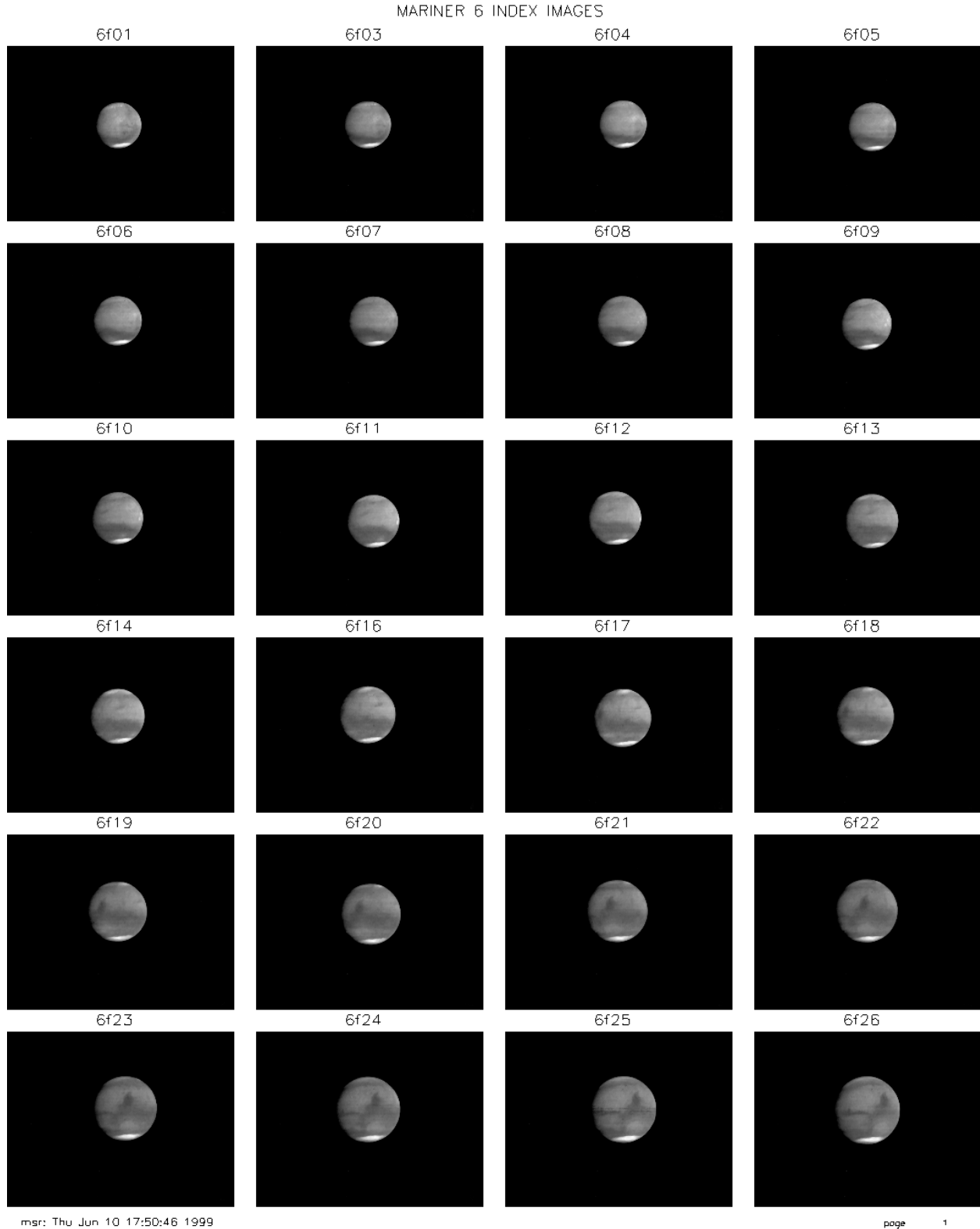


Figure 1. Mariner 6 Far Encounter images 1 - 26

MARINER 6 INDEX IMAGES

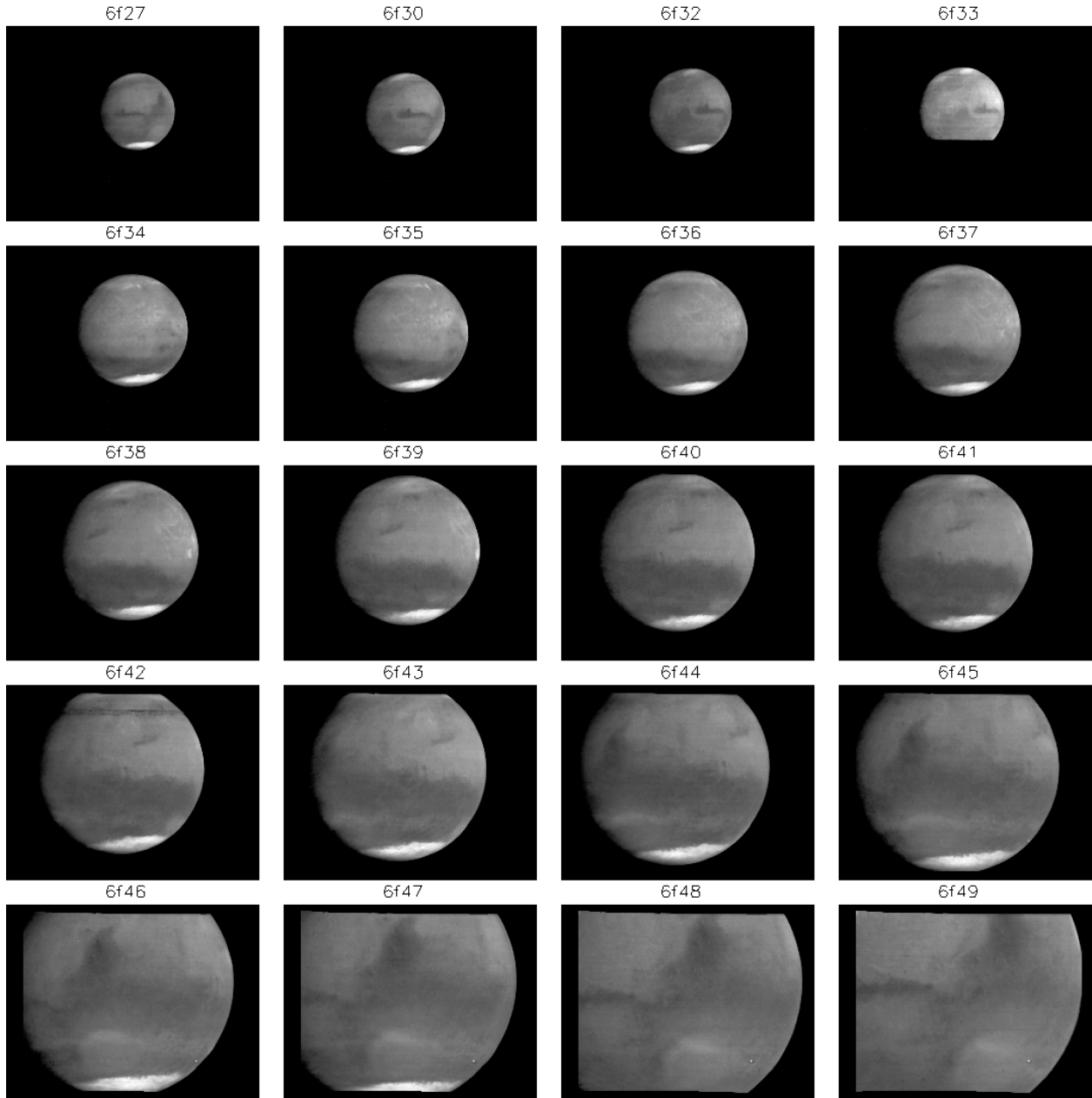


Figure 2. Mariner 6 Far Encounter images 27 - 49

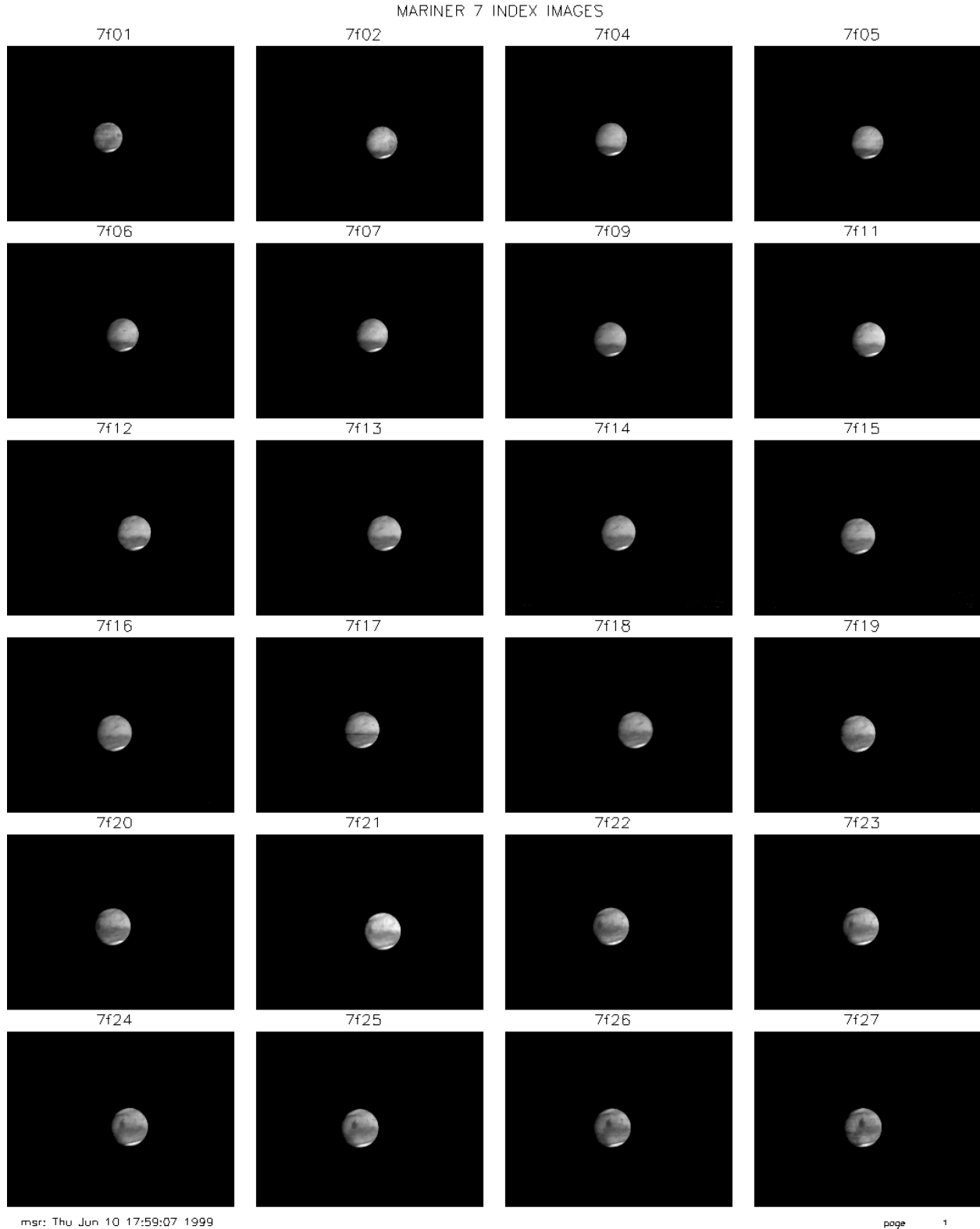
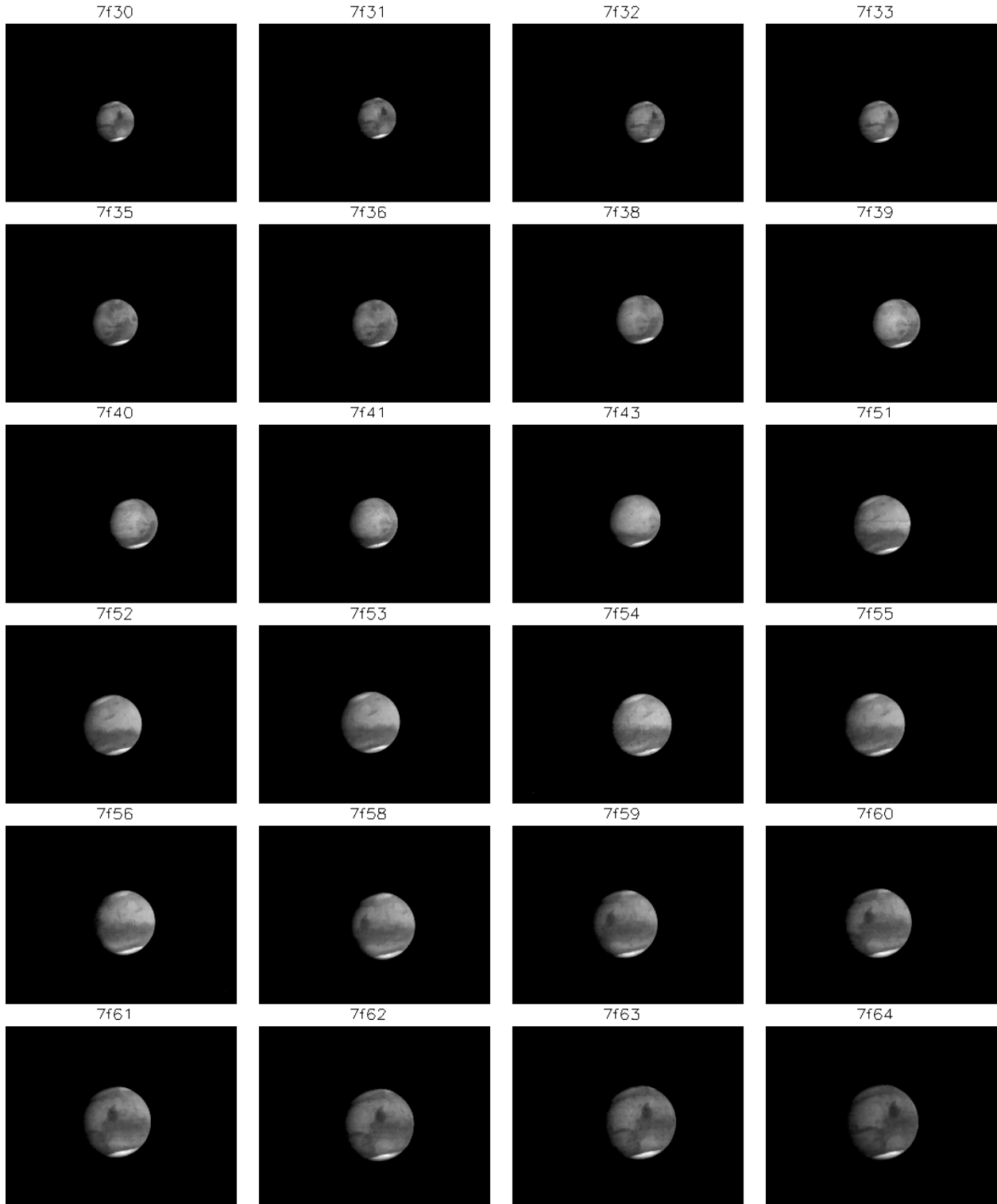


Figure 3. Mariner 7 Far Encounter images 1 - 27

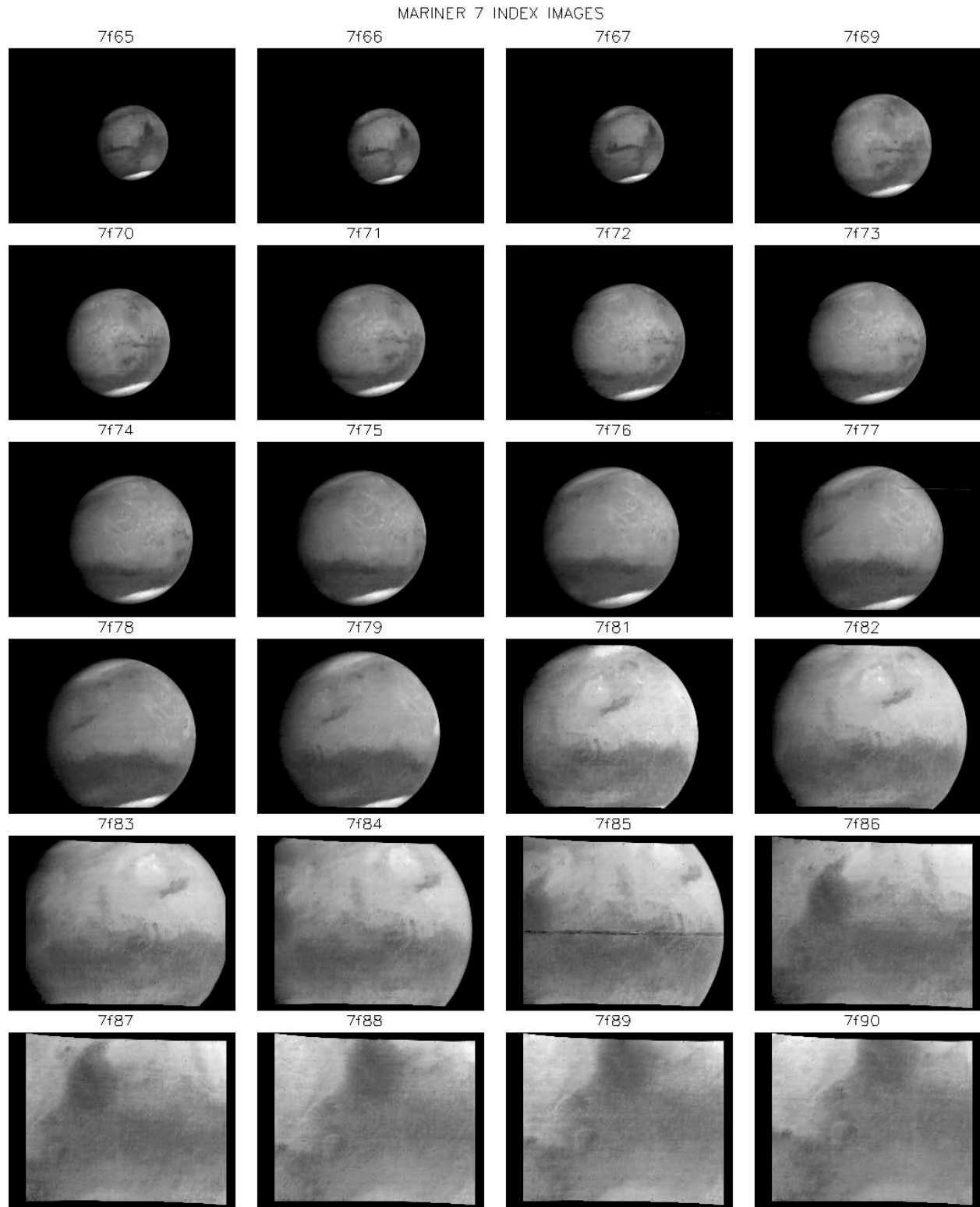
MARINER 7 INDEX IMAGES



msr: Thu Jun 10 18:00:25 1999

page 2

Figure 4. Mariner 7 Far Encounter images 30 - 64



msr: Thu Jun 10 18:01:45 1999

page 3

Figure 5. Mariner 7 Far Encounter images 65 - 90

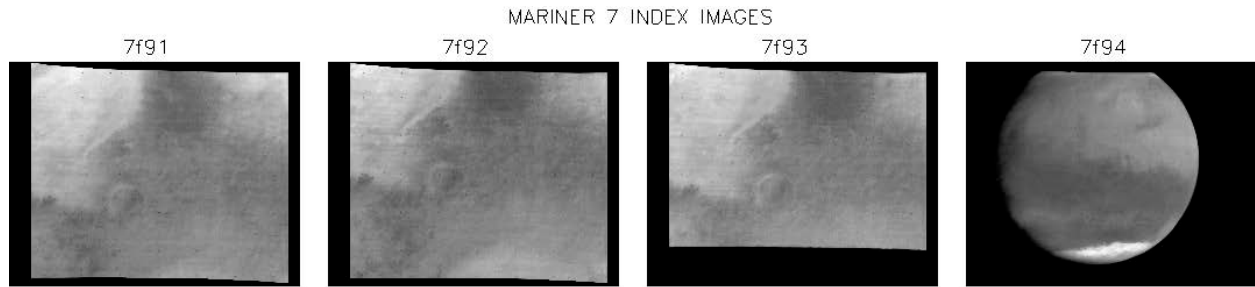


Figure 6. Mariner 7 Far Encounter images 91 - 94

MARINER 6/7 INDEX IMAGES

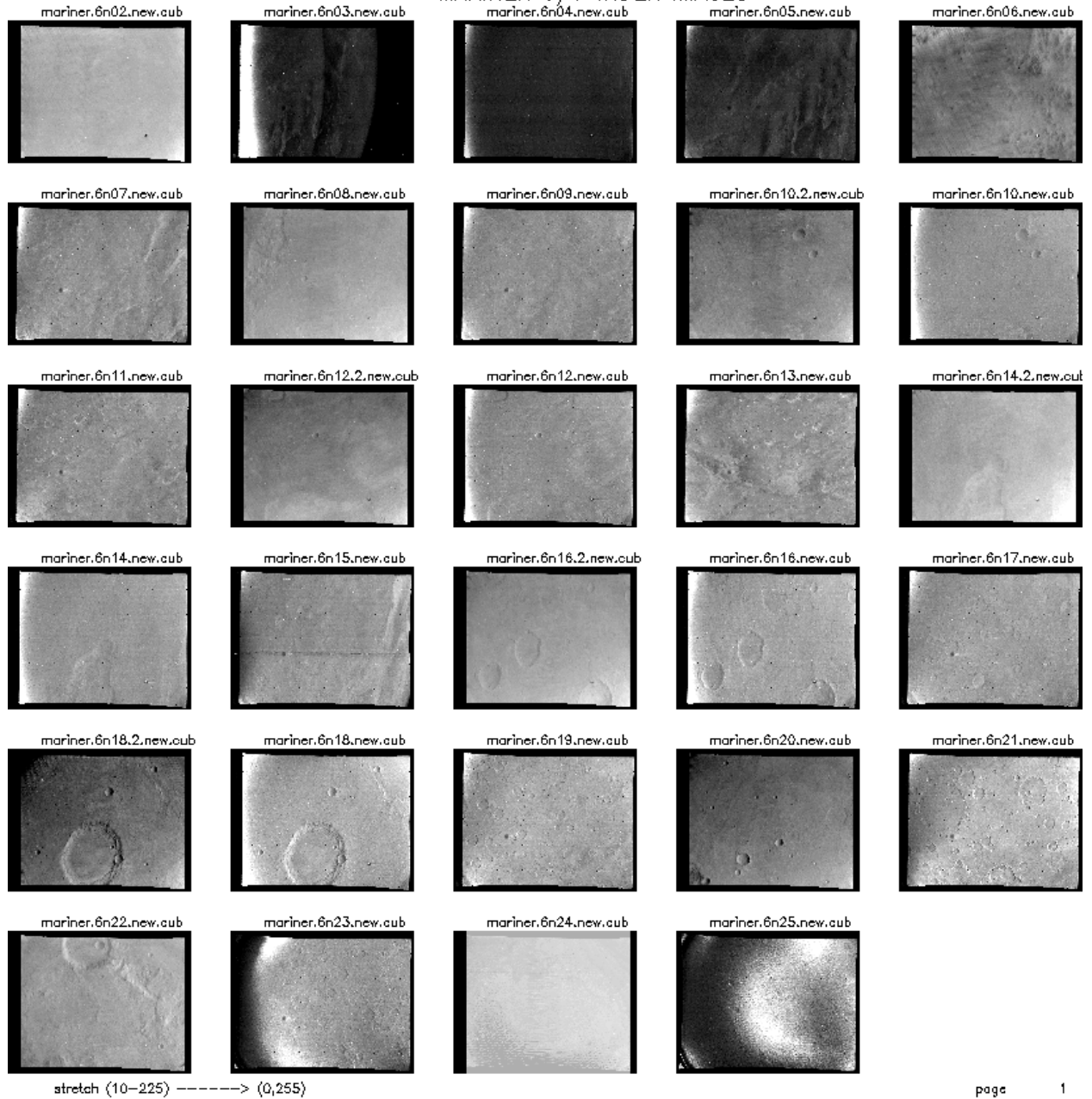


Figure 7. Mariner 6 Near Encounter images 2 - 25

MARINER 6/7 INDEX IMAGES

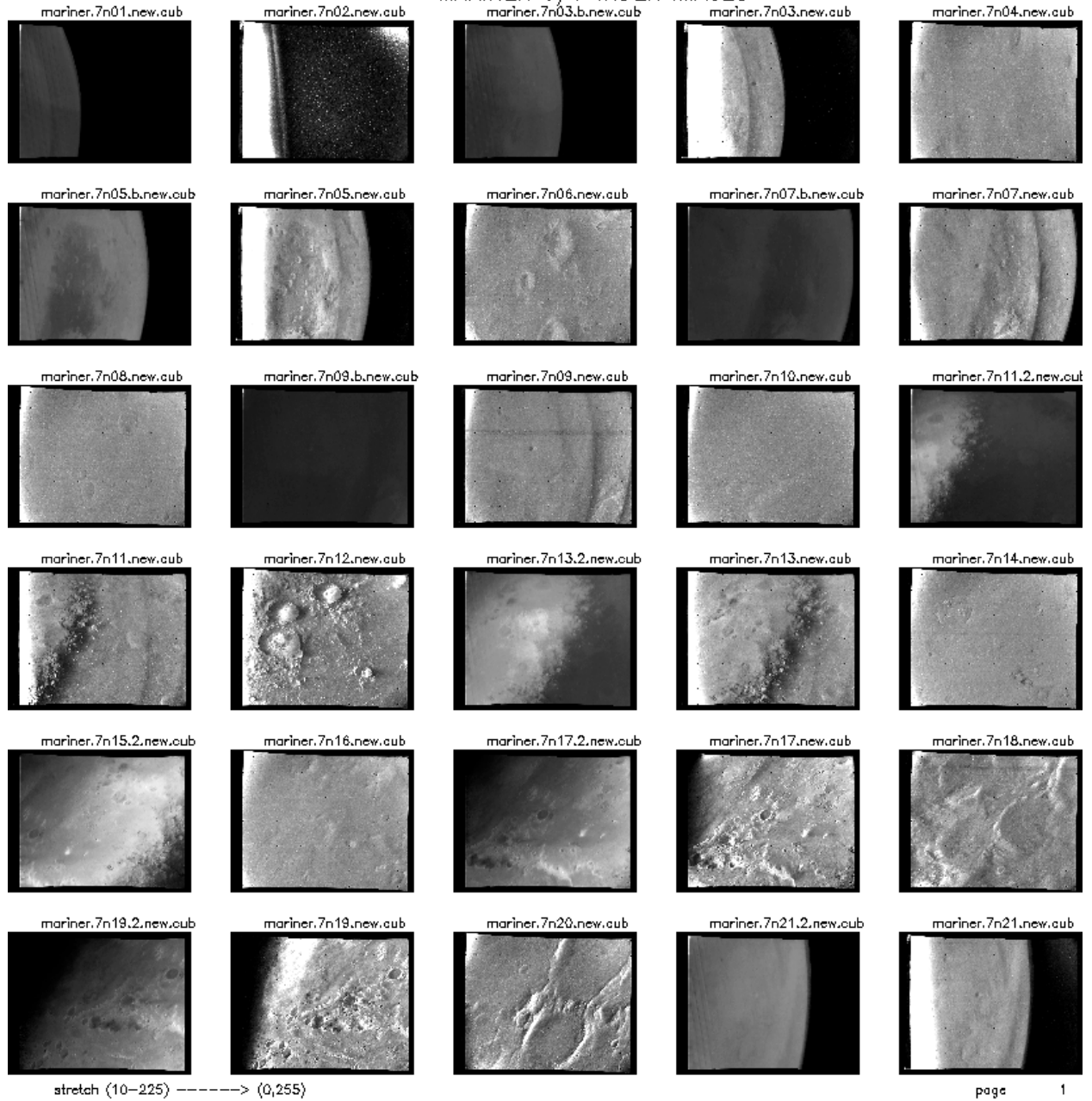
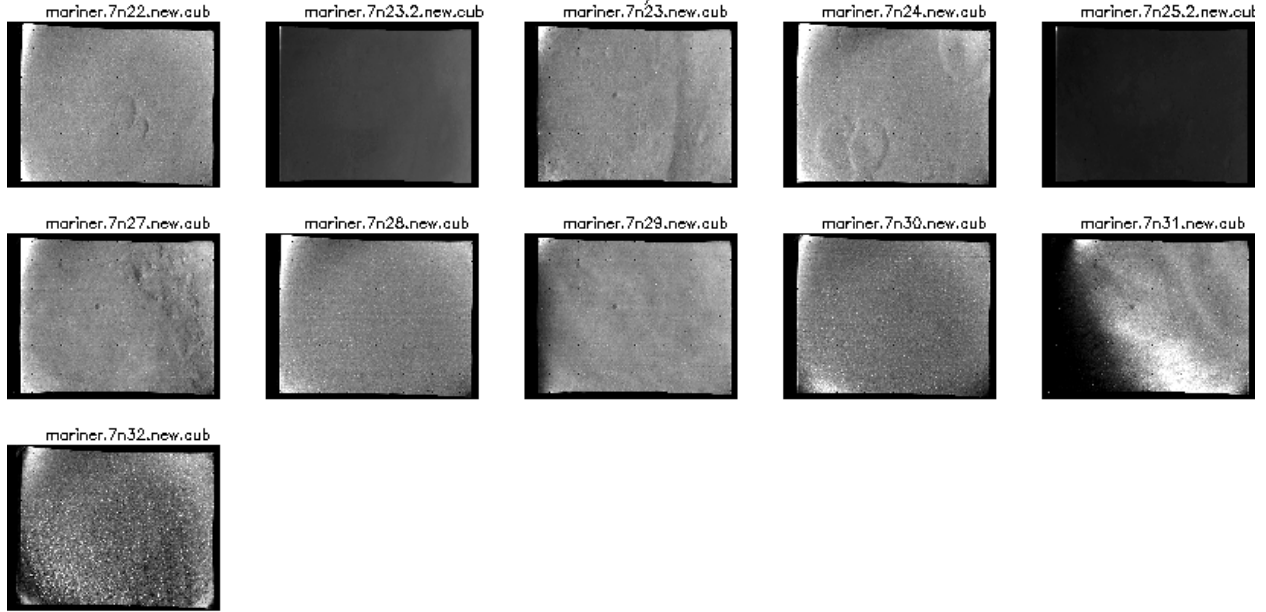


Figure 8. Mariner 7 Near Encounter images 1 - 21

MARINER 6/7 INDEX IMAGES



stretch (10-225) -----> (0,255)

page 2

Figure 9. Mariner 7 Near Encounter images 22 - 32