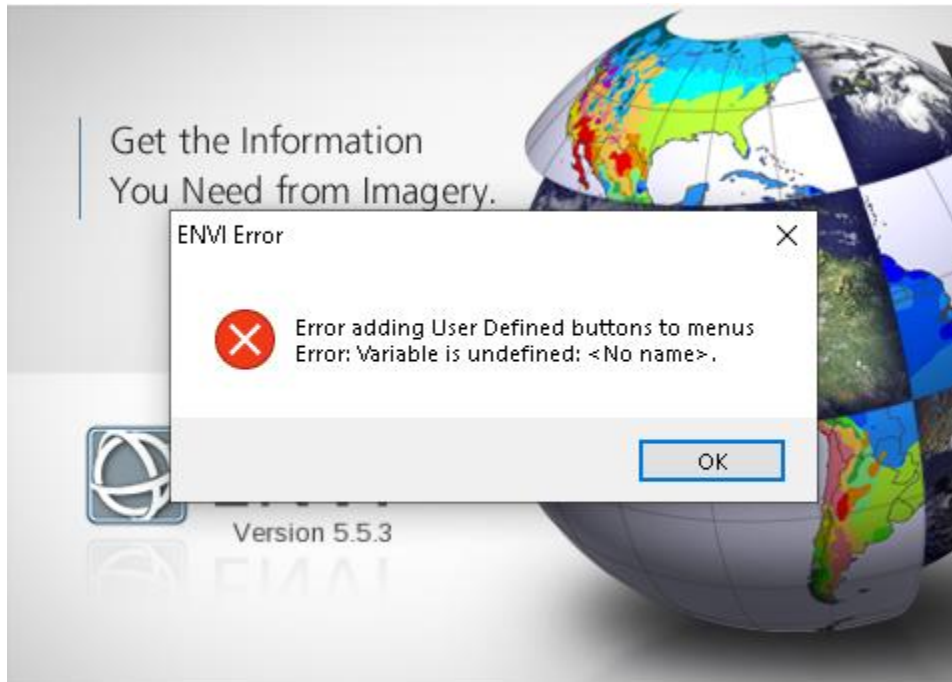


The latest ENVI 5.5.3 has an error for CAT on standard and classical interface (as shown below):



For CAT in ENVI standard, after clicking “OK”, CAT will load and work properly. But for CAT in ENVI classical, CAT won’t be loaded. To fix this problem, an updated CAT package has been posted in PDS Geoscience Node:

<https://pds-geosciences.wustl.edu/missions/mro/crism.htm>

You can download and reinstall it following the installation instruction.

But if you don’t want to reinstall it, you can download the fix files and replace them in related location. To do so, you need download ENVI553\_FIX.zip file. Unpack the zip file and copy the CAT\_ENVI folder to your CAT installed directory. Replace the files in the destination. Then run IDL to create the cat menu (refer to Section 3 in CAT setup instruction).

For Default installation in windows:

- Start IDL. At the IDL> prompt in the console window, enter these commands:

```
.RESET_SESSION
```

```
.COMPILE 'C:\Program Files\CAT_ENVI\save_add\CAT_programs\cat_menu.pro'
```

```
RESOLVE_ALL, /CONTINUE_ON_ERROR, SKIP_ROUTINES='ENVI'
```

```
SAVE, FILENAME = 'C:\Program Files\CAT_ENVI\tmp\cat_menu.sav', /ROUTINES
```

- Move the cat\_menu.sav file from the C:\Program Files\CAT\_ENVI\tmp folder to your ENVI installed path inside envi5x\extensions\ folder.
- Quit IDL.

If you install CAT to a directory other than the default (Section 4 in CAT setup instruction).

For Custom installation in windows:

- Start IDL. At the IDL> prompt in the console window, enter these commands, replacing all occurrences of "C:\Program Files\CAT\_ENVI" with the new location:

```
.RESET_SESSION
```

```
.COMPILE 'C:\Program Files\CAT_ENVI\save_add\CAT_programs\cat_menu.pro'
```

```
RESOLVE_ALL, /CONTINUE_ON_ERROR, SKIP_ROUTINES='ENVI'
```

```
SAVE, FILENAME = 'C:\Program Files\CAT_ENVI\tmp\cat_menu.sav', /ROUTINES
```

- Move the cat\_menu.sav file from CAT\_ENVI\tmp folder to your ENVI installed path inside envi5x\extensions\ folder.
- Quit IDL.

For Unix:

- Start IDL. At the IDL> prompt in the console window, enter these commands:

```
.RESET_SESSION
```

```
.COMPILE '~/CAT_ENVI/save_add/CAT_programs/cat_menu.pro'
```

```
RESOLVE_ALL, /CONTINUE_ON_ERROR, SKIP_ROUTINES='ENVI'
```

```
SAVE, FILENAME = '~/CAT_ENVI/tmp/cat_menu.sav', /ROUTINES
```

- Move the cat\_menu.sav file from the ~/CAT\_ENVI/tmp folder to your ENVI installed path inside envi5x/extensions/ folder.
- Quit IDL